

PHILADELPHIA REGIONAL PORT AUTHORITY
PORT OF PHILADELPHIA



PRPA at a Glance



-  6th consecutive year of sustained growth
-  Channel deepening continues
 - PRPA Management on track
 - New deeper main channel to be completed by 2017
-  Successful Re-tooling of the Tioga Marine Terminal
 - New customers show strong interest
-  Southport; Fall 2015 RFQ – Spring 2016 RFP
 - PRPA has invested approximately \$30 million on site prep work
-  PRPA hits record volumes in Import car volumes
-  New shipping service from Mexico.
-  New S. American services APL, NYK, SeaLand and Yang Ming at PAMT
-  New paper customer at Piers 38 & 40, 70,000 MT – 12 ships

Big Ships



Philadelphia Regional
Port Authority



- Channel deepening will allow the Port of Philadelphia to accommodate vessels up to 10,000 TEU ships. An extensive capital improvement program to PAMT will allow it to handle larger vessels.
 - New Panama Canal will accommodate vessels up to 12,500 TEUs.

Delaware River Deepening



Philadelphia Regional
Port Authority



Current Depth: 40 Feet (12.19 meters)

Future Depth: 45 feet (13.72 meters)

Length: 103 miles

Cost Estimate: \$365 million

Material: 16 million cubic yards of dredge materials

**The Delaware River has a 6 foot (1.83 meter) tide*

Duration: 7 years

Sponsor: U.S. Army Corps of Engineers

Local Sponsor: Philadelphia Regional Port Authority

Progress: 80% completed. Expected completion in 2017

PRPA Facilities

16 Facilities, 1,000 Acres of Property



Philadelphia Regional
Port Authority



1. Piers 38 & 40
2. Philadelphia Forest Products Center (Piers 78 & 80)
3. Pier 82
4. Pier 84
5. Piers 96, 98 & 100
6. Philadelphia Auto Processing Facility
7. Packer Avenue Marine Terminal
8. Pier 122
9. Pier 124
10. Southport Marine Terminal Complex

11. 3200 Tioga
12. PRPA Admin Building
13. Tioga Liquid Bulk Terminal (Kinder Morgan)
14. Tioga Marine Terminal
15. PRPA Lot on Essington Avenue
16. Philadelphia Wholesale Produce Market

Other

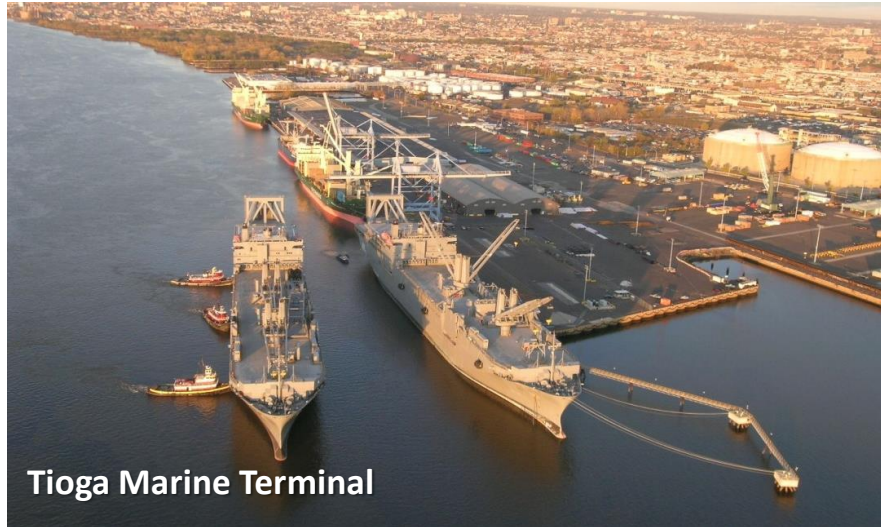
17. CSX Intermodal Greenwich Yard
18. NSRC Intermodal
19. Conrail Loop

Port Facilities

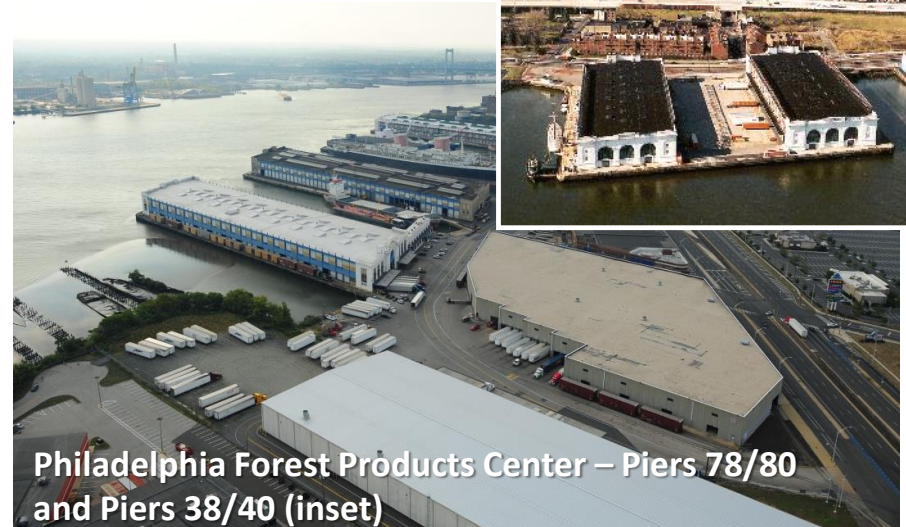
Core Facilities



Philadelphia Regional
Port Authority



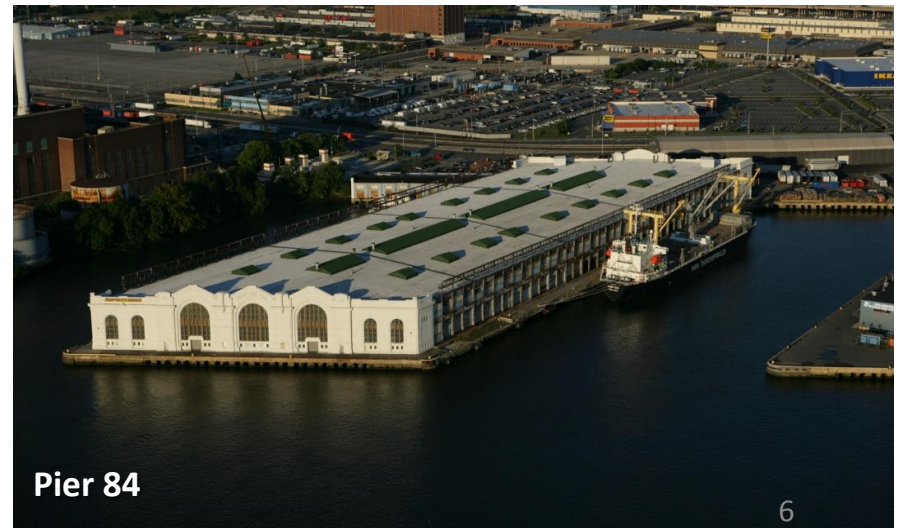
Tioga Marine Terminal



Philadelphia Forest Products Center – Piers 78/80
and Piers 38/40 (inset)



Pier 82



Pier 84

Port Facilities

Core Facilities



Philadelphia Regional
Port Authority



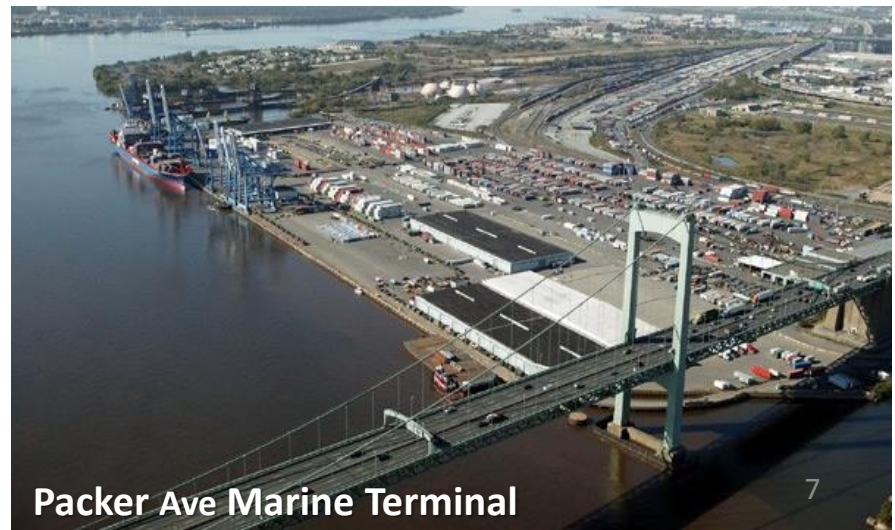
Philadelphia Wholesale Produce Market



Philadelphia Auto Processing Facility



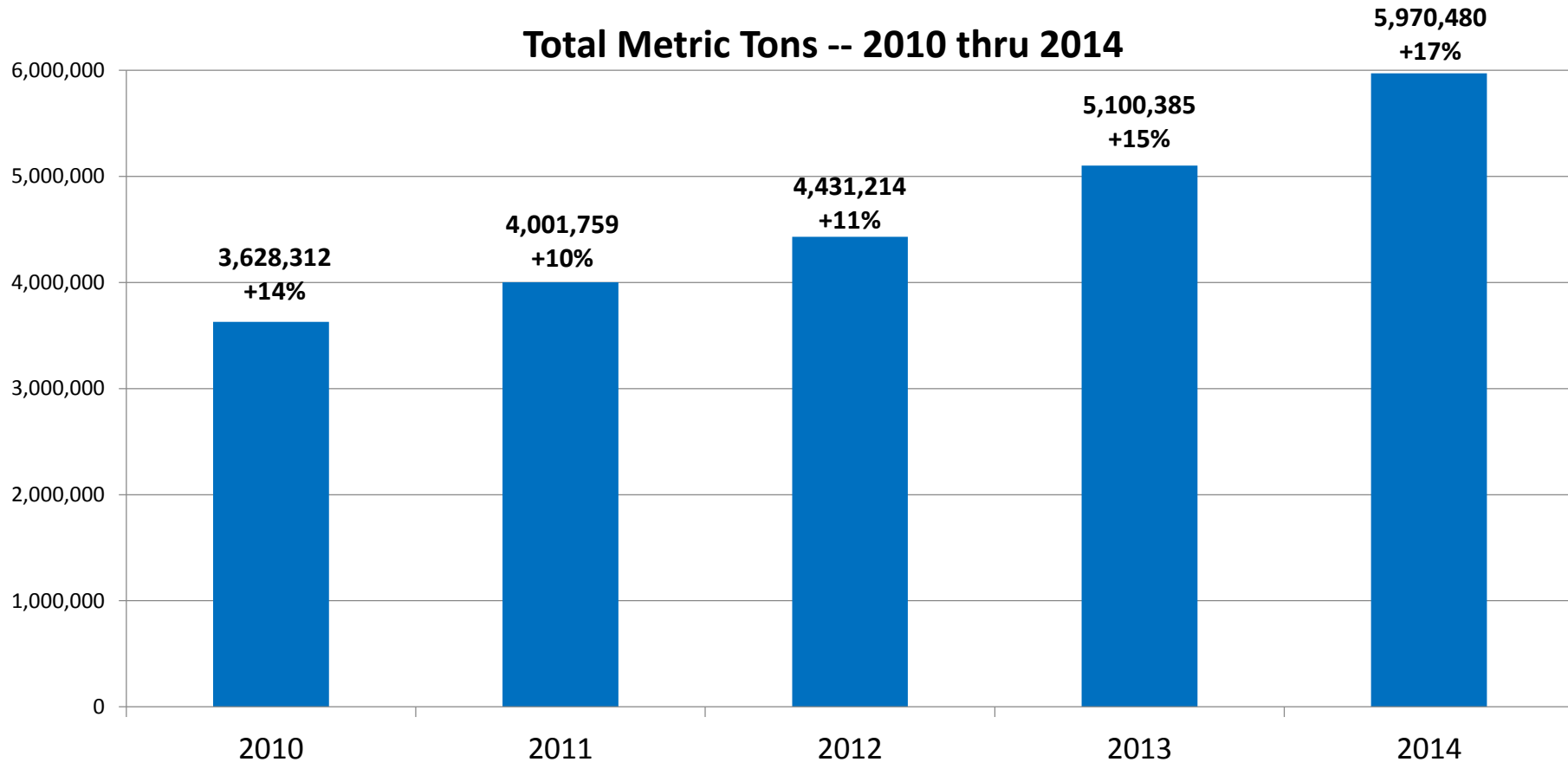
Piers 122 & 124



Packer Ave Marine Terminal

Five Years of Double Digit Growth

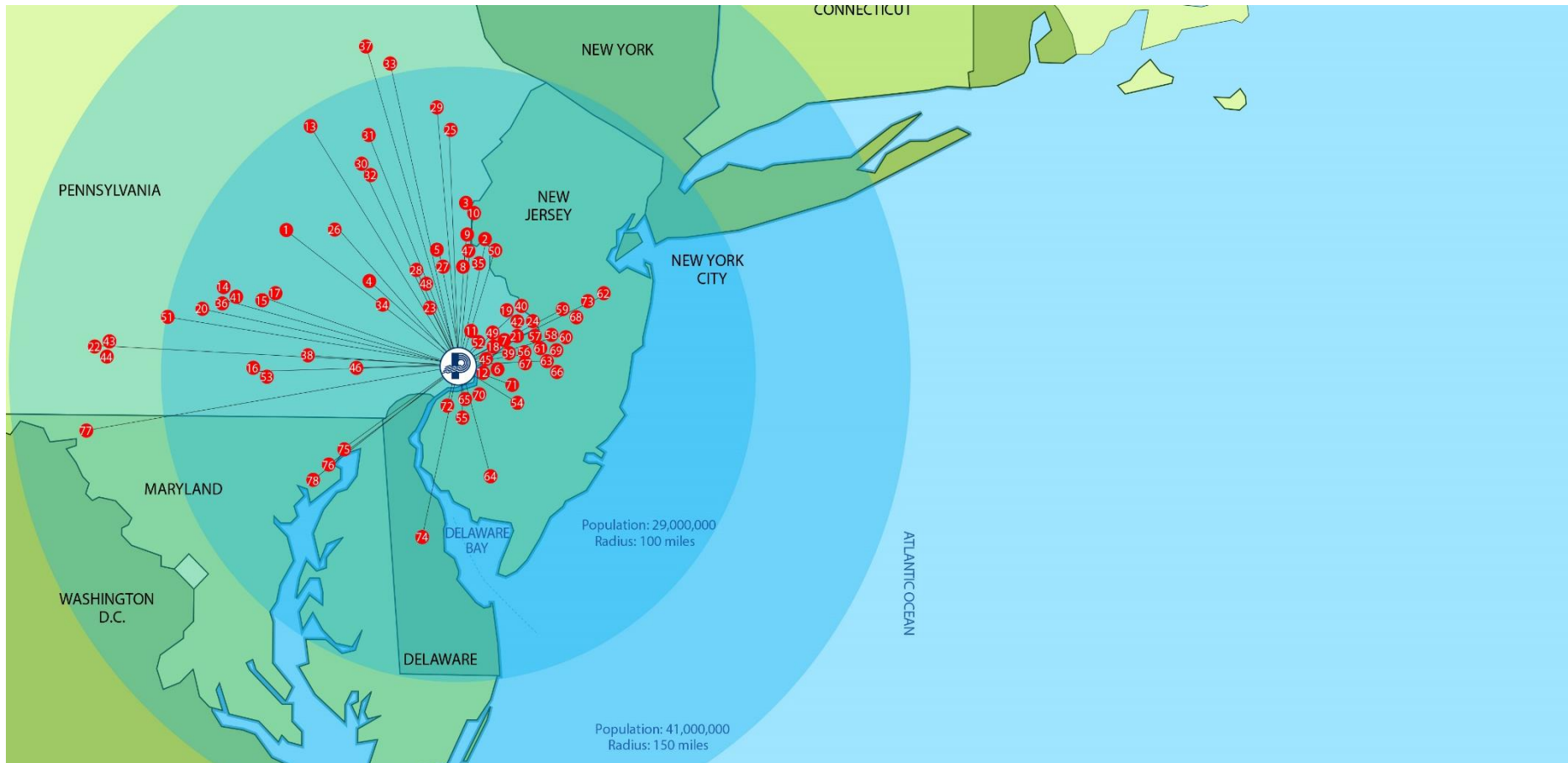
Total Metric Tons -- 2010 thru 2014



Cargo increase averages: TEUS 19.36%, Breakbulk 14.44%. Liquid Bulk 13.39%, Auto 18.12% and Total Metric Tonnage 16.66%

Distribution Centers – Imports

Continue to locate in PRPA Hinterland
Fifth Largest Metropolitan Area



- Over 250 distribution centers lie within the PRPA's immediate hinterland

No Port Congestion

Continues in Competing Ports



Philadelphia Regional
Port Authority

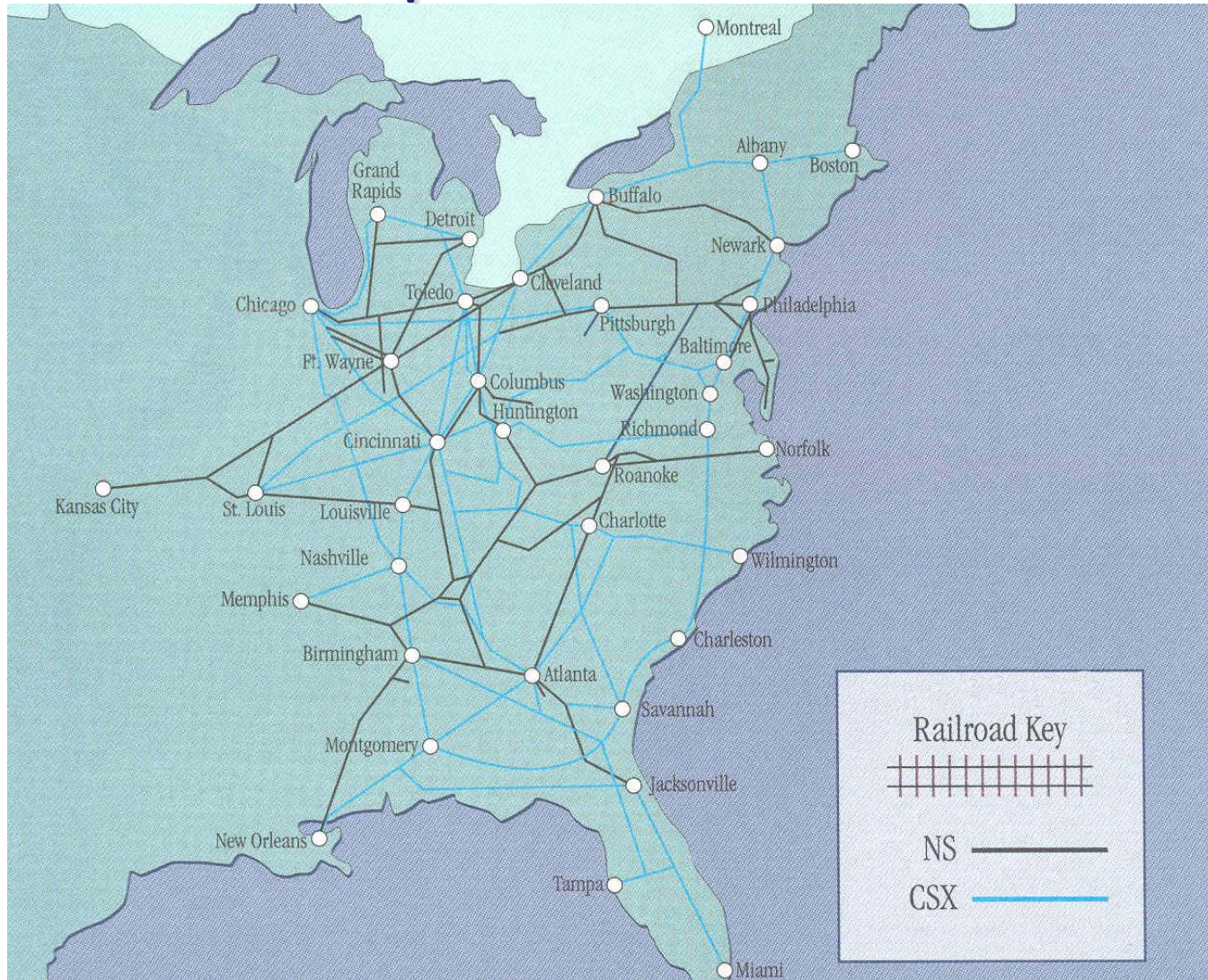


- Less terminal congestion compared to other East Coast ports
 - Quicker ship and truck turn times

Rail Connections through Port Philadelphia



Philadelphia Regional
Port Authority



Global Leader in Food Imports

#1 in USA for

- Chilean Fruit
- Cocoa Beans
- Bananas
- Australian Meat
- New Zealand Dairy

In 2015, Delaware River Ports

- \$2 Billion in Fruit Imports
- \$5 Billion in Food Imports



The Philadelphia Advantage



Philadelphia	New York
Air draft of 188 ft (57.3 m)	Air draft of 150 ft (45.7 m) (Bayonne Bridge)
No assessment	NYSA assessment – on average an additional charge of \$100 per container
19 ILA start times	5 ILA start times
6.5 hours from sea buoy	4 hours from sea buoy
No pension withdrawal liability	Pension withdrawal liability
Gross production of 32 moves an hour with individual vessel gross production reaching 40 moves an hour	Gross moves per hour typically less than Philadelphia
Truck turn time less than 1 hour due to lower density operation	Truck turn time unfavorable due to high density operation and overall congestion
10 ILA holidays per year	16 ILA holidays per year

Temperature Controlled Storage Capacity



Philadelphia Regional
Port Authority



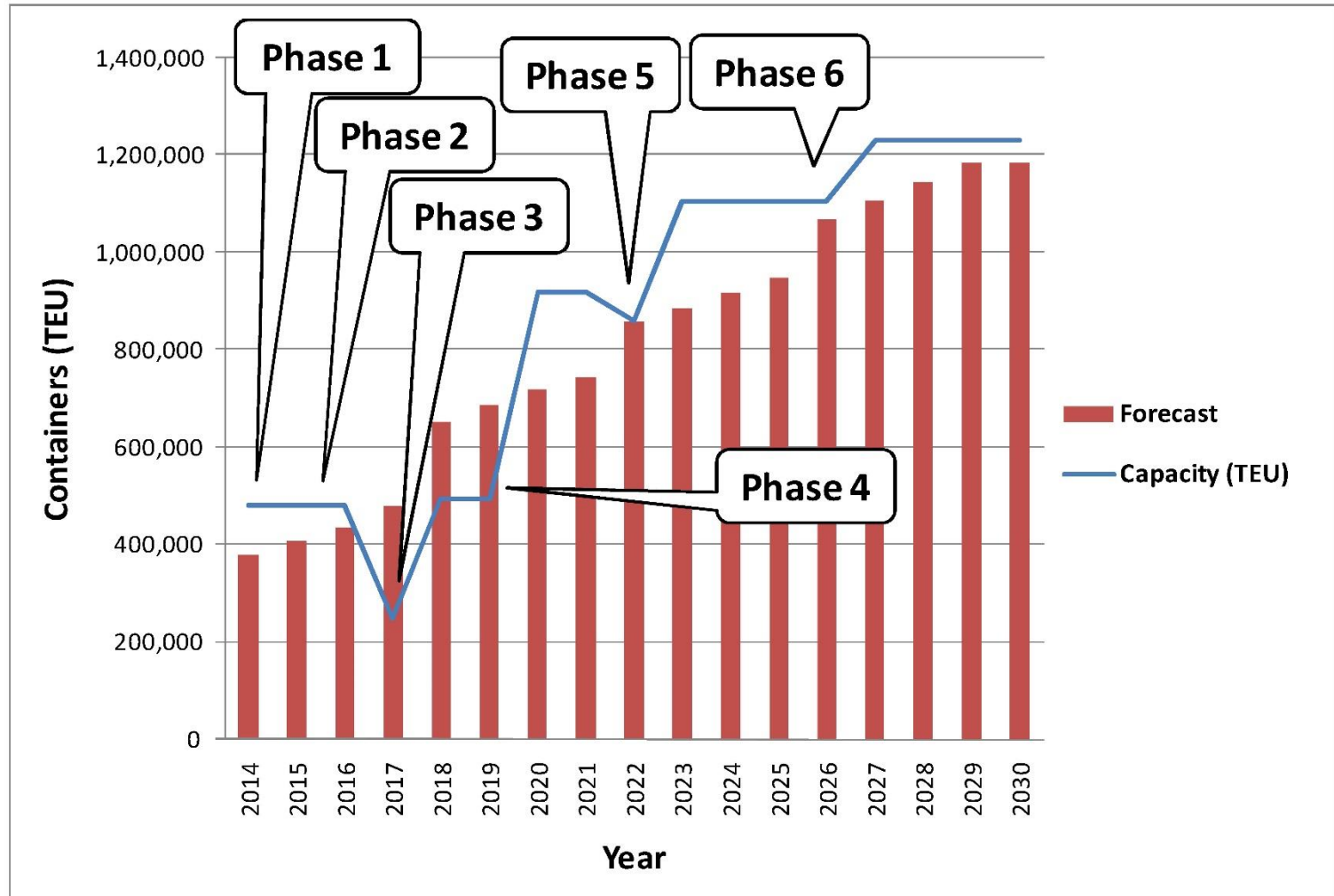
- Over 365,973 sq. ft. of on-dock refrigerated warehouse capacity
- 2,175,383 cu. ft. on-dock freezer warehouse located on Packer Avenue Marine Terminal
- On-dock electrical outlets for perishables containers (known as “reefer plugs”)
- PRPA terminals have 2,000 reefer plugs

Packer Avenue Marine Terminal

Demand Forecast



Philadelphia Regional
Port Authority

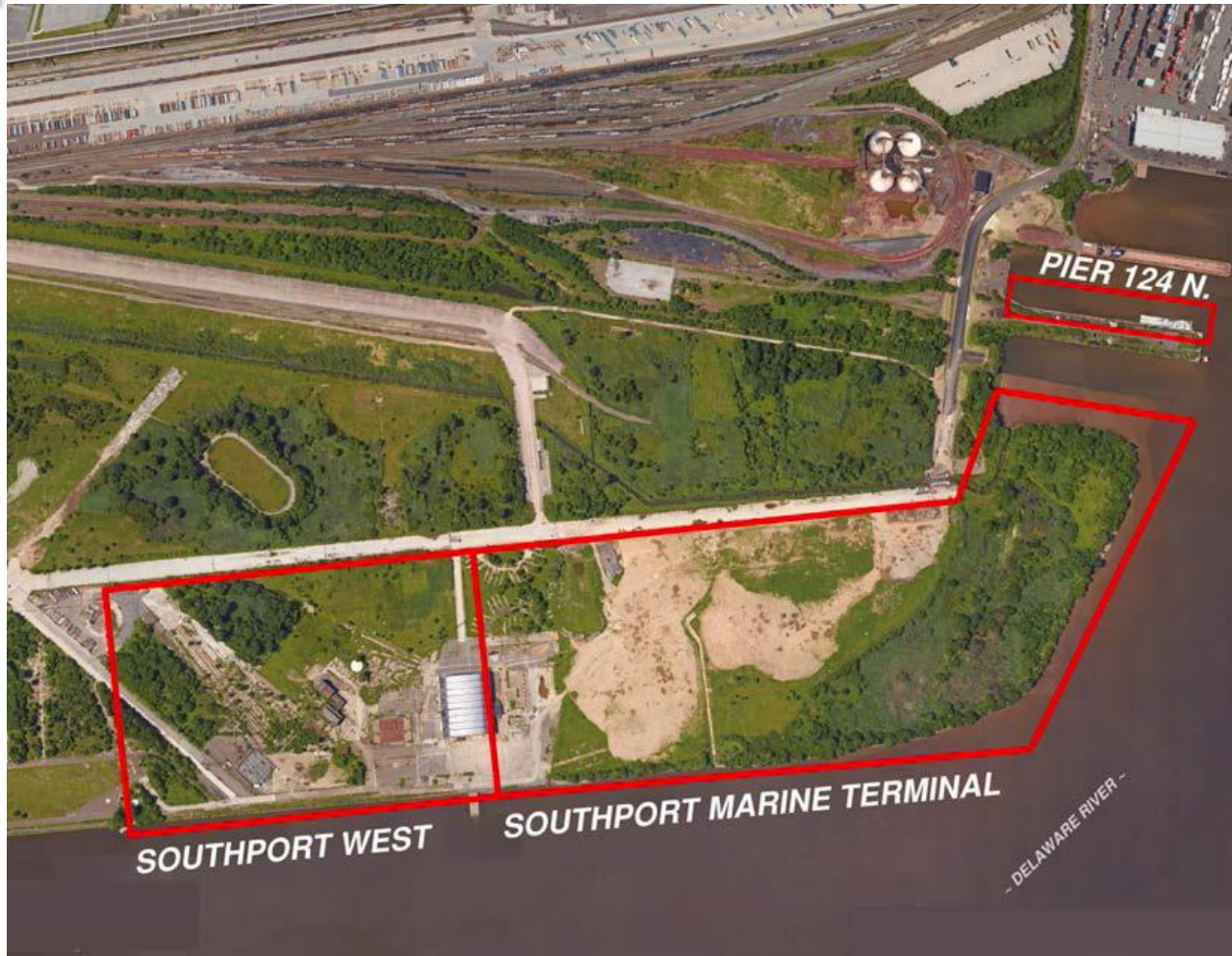


Future capital needs for Packer Avenue Marine Terminal estimated at \$136 - \$256 million. Discussions with the tenant and State are progressing.

Southport Marine Terminal Complex



Philadelphia Regional
Port Authority



*For information on the development of the future Southport Marine Terminal Complex,
go to – www.philaport.com/SouthportRFQ.html*

Southport Marine Terminal Complex



Philadelphia Regional
Port Authority

(Artist Rendering)

(Left to Right)
Container Terminal And
Ancillary Logistics Port,
CSX and Norfolk Southern
Intermodal Yards, I-95

SeaLand
Atlantico



Carrier Services

Smaller Ports; Specialized Services



Philadelphia Regional
Port Authority

SL Atlantico

SL Atlantico Northbound



SeaLand

Welcome to Philadelphia!

New Latin American Connections Through The Port of Philadelphia

PRPA happily announces new services calling the Port of Philadelphia

SeaLand's new weekly services offer connections to Colombia, Guatemala, Honduras, and Panama; with mid-week arrival into Philadelphia for fresh fruit and frozen goods.

For additional information, contact: marketing@philaport.com
215.426.2600

www.philaport.com



SeaLand



- New services connecting Port Philadelphia with Central America and Mexico. Maiden call of the new Mexican service commenced earlier this month. 6 days from Phila. to Veracruz!



A direct, **all water** service offers a 6 day, reliable transit from **Altamira** to **Philadelphia**

From Philadelphia, reach out to **40%** of the US population via **rail and truck**



The Atlantico benefits

- Avoid cargo being transloaded at the border in Texas
- Increased cargo payload on an all-water service
- Reduced cargo damage due to road vibrations
- Significantly reduced CO2 emissions moving by all-water
- Access to the lucrative US East Coast market at competitive levels, equal to other LAM countries such as Peru, Costa Rica and Argentina
- Overall truck mile savings throughout the main truck traffic corridors into the Northeastern United States
- Rail access from Philadelphia allows further connectivity to all major cities in the U.S. and Canada



Thank You

For more information, contact PRPA Marketing at (215) 426-2600 or marketing@philaport.com