

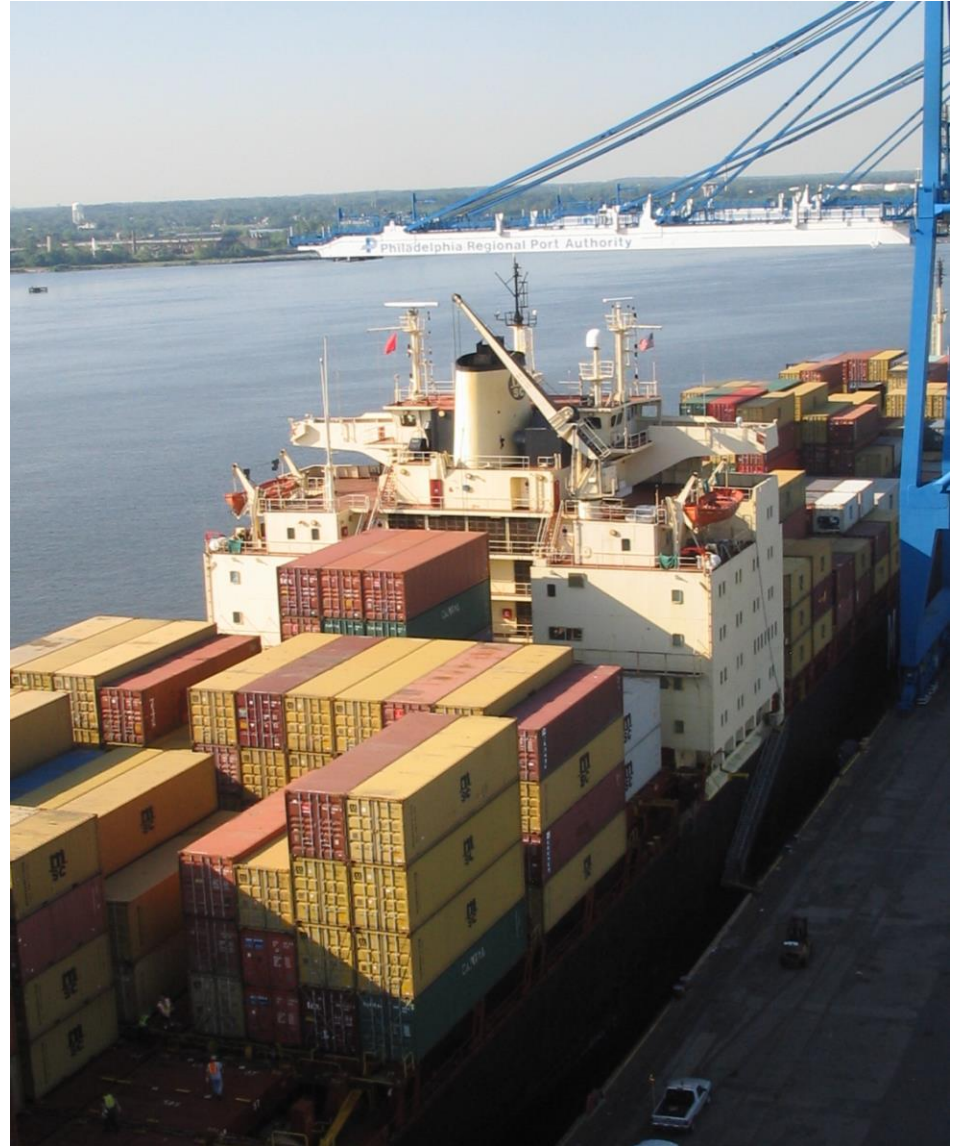


Philadelphia Regional Port Authority



Background: Philadelphia Region

- Marine facilities on the Delaware River worked over 50,000,000 tons of cargo in 2014.
- The Delaware River handled 2,340 ships in 2014.



Philadelphia Regional Port Authority



Philadelphia Regional
Port Authority

- A Pennsylvania state agency, PRPA owns 15 facilities on the Delaware River in Pennsylvania.
- Terminals are leased to private operators. PRPA provides maintenance, marketing, and other services.



Port Facilities: PRPA Terminals

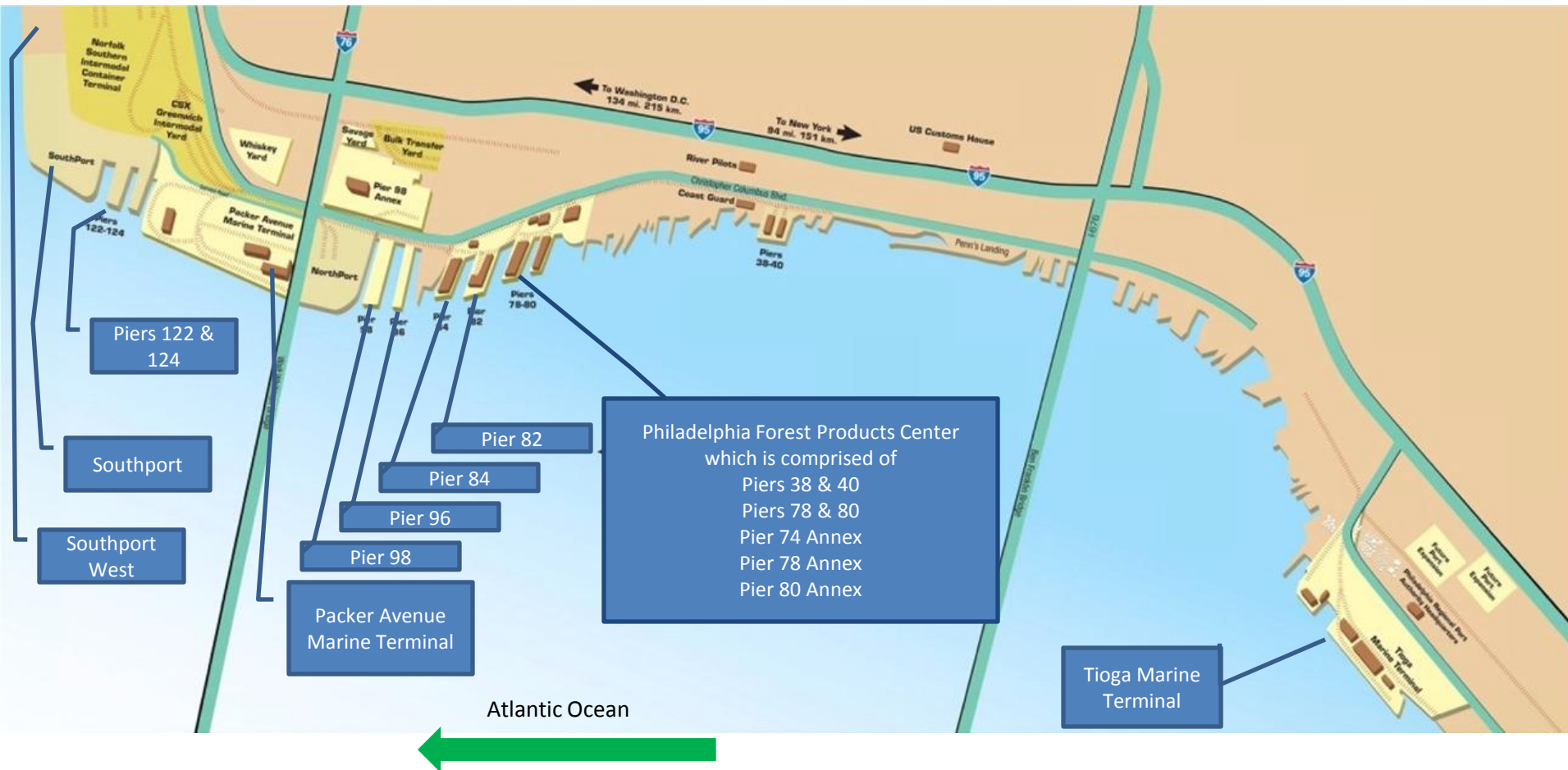


- 6 million tons of cargo, including 449,112 TEUs, passed through PRPA facilities in 2014.
- Last year, PRPA facilities worked over 680 ships.

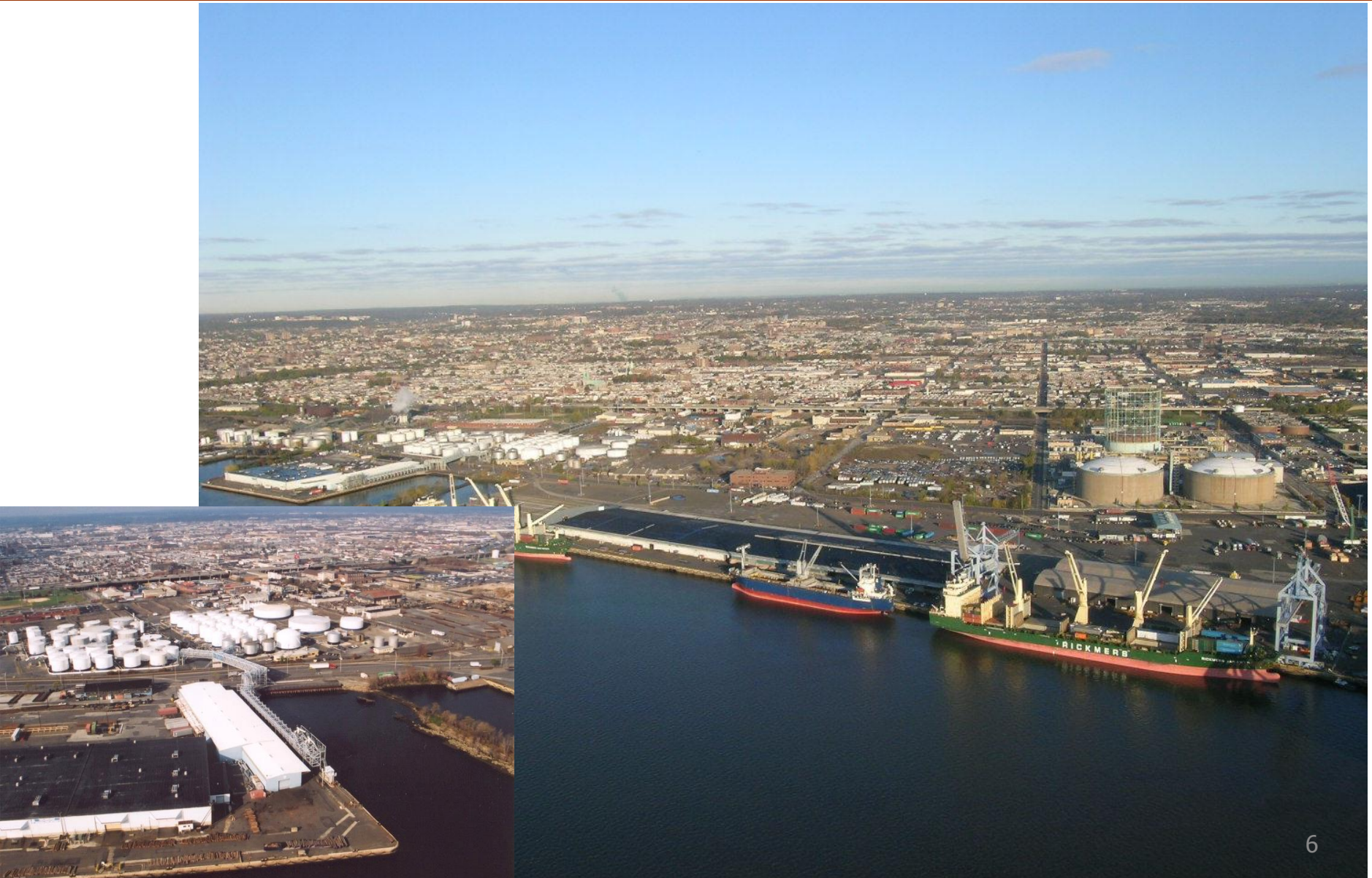
PRPA Marine Terminals



Philadelphia Regional
Port Authority



Tioga Marine Terminal & Tioga Liquid Bulk Terminal



Philadelphia Forest Products Center



Pier 82



Pier 84



Packer Avenue Marine Terminal



Philadelphia Regional
Port Authority



Southport



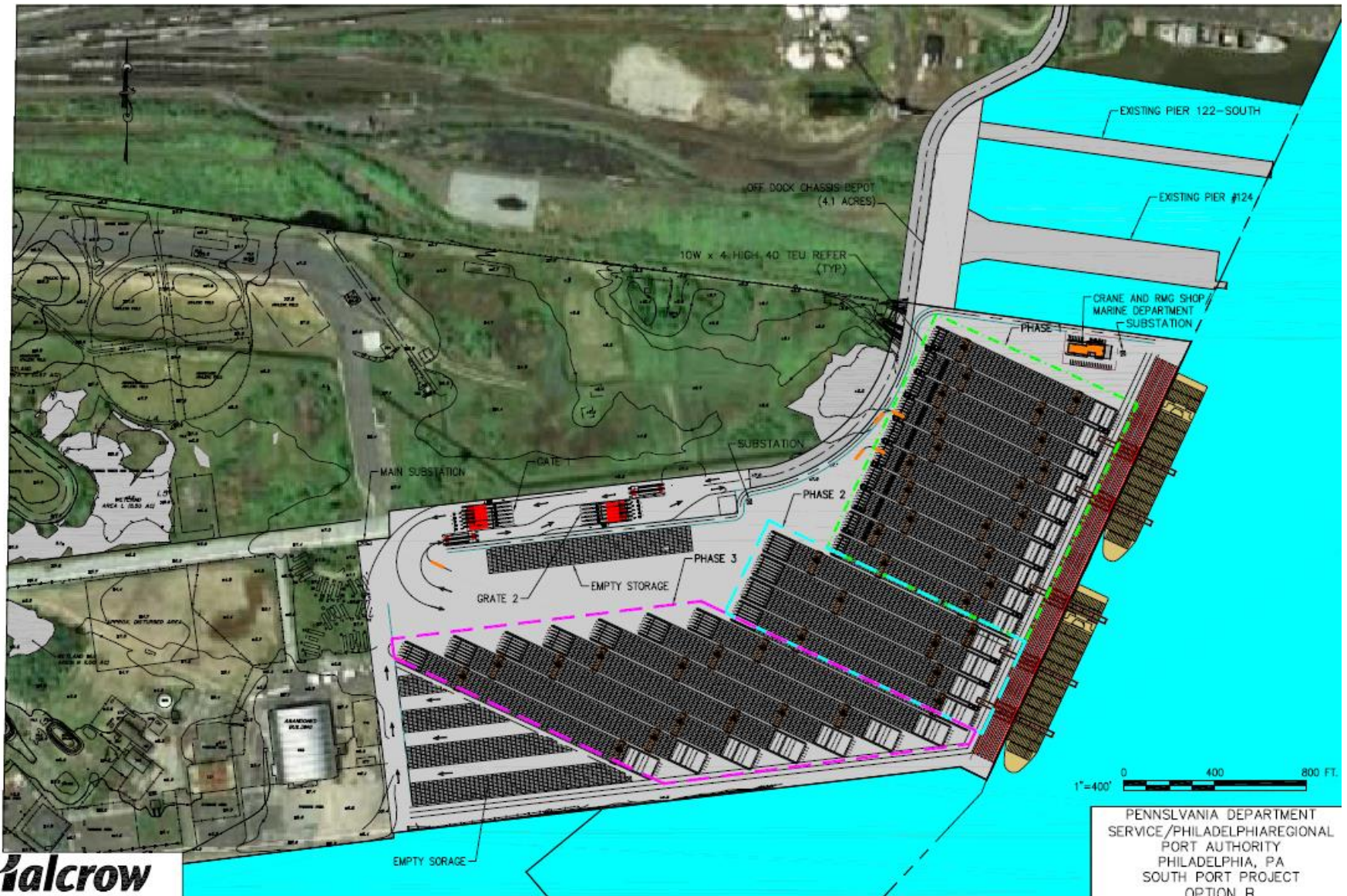
Philadelphia Regional
Port Authority



Southport Container Facility Conceptual



Philadelphia Regional
Port Authority



Philadelphia Wholesale Produce Market

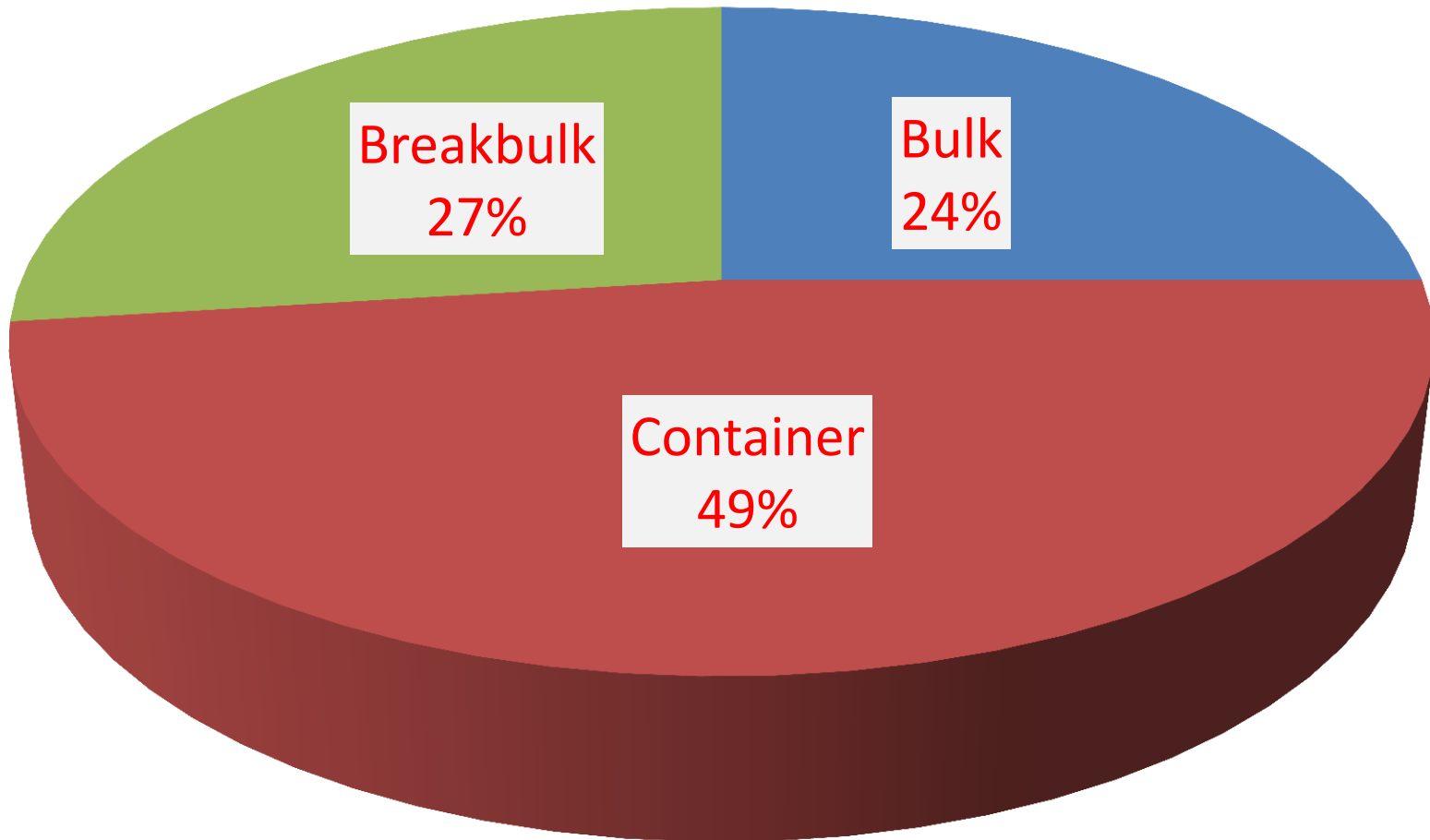


- Public private partnership
- \$152 million in State funds
- Size: 667,000 square feet

- North America's largest contiguous refrigerated facility



Cargo Categories



PRPA Terminals --
2014

Perishables



Philadelphia Regional
Port Authority

- Fruit arrives into Philadelphia from Chile, Brazil, South Africa, and others.
- Meat imports come mainly from Australia, New Zealand, Uruguay, Brazil, and Chile.
- Federal On-Dock Inspection Sites.



Perishable Categories



Philadelphia Regional
Port Authority

- PRPA facilities handled 225,294 metric tons of produce in 2014
- Fruits from around the world
- Increasing volumes of other vegetables



Forest Products



Philadelphia Regional
Port Authority

- 52 acre Forest Products Distribution Center.
- Over 1,700,000ft² of warehouse space, over 5,000ft of berthing space.
- Main Suppliers: Belgium, Canada, Chile, Finland, Germany, and Sweden.



Steel

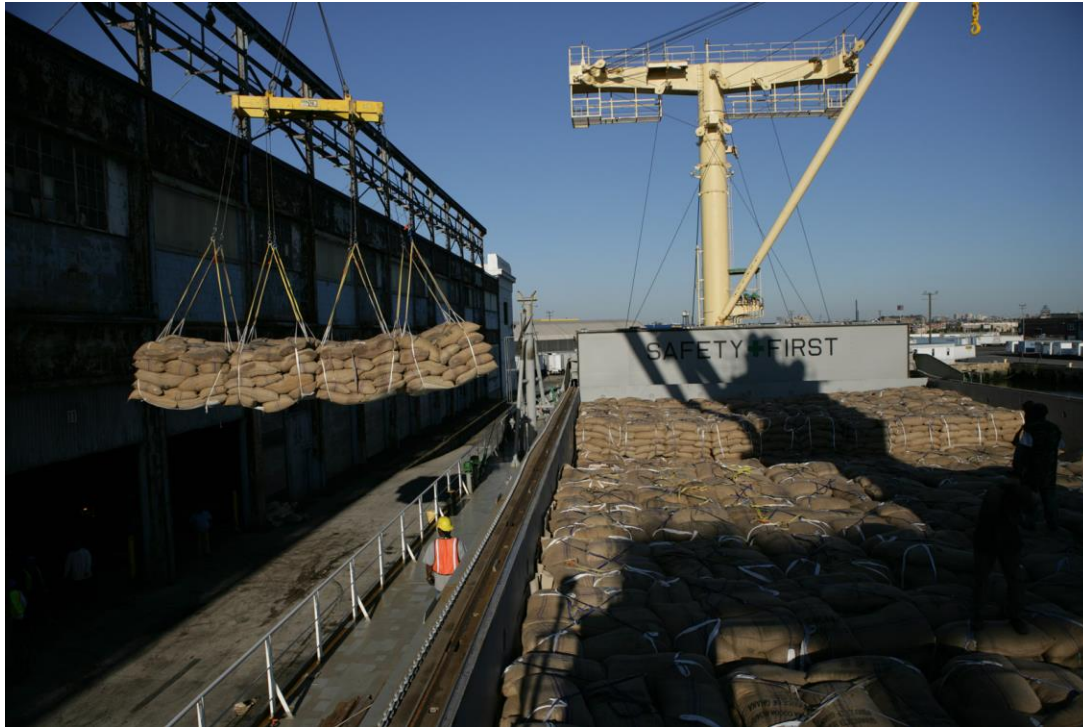


- Imported steel moves through the U.S. and into Canada via CSX and Norfolk Southern railways.
- Steel is exported and imported at Packer Avenue and Tioga Marine Terminals.

Cocoa



Philadelphia Regional
Port Authority



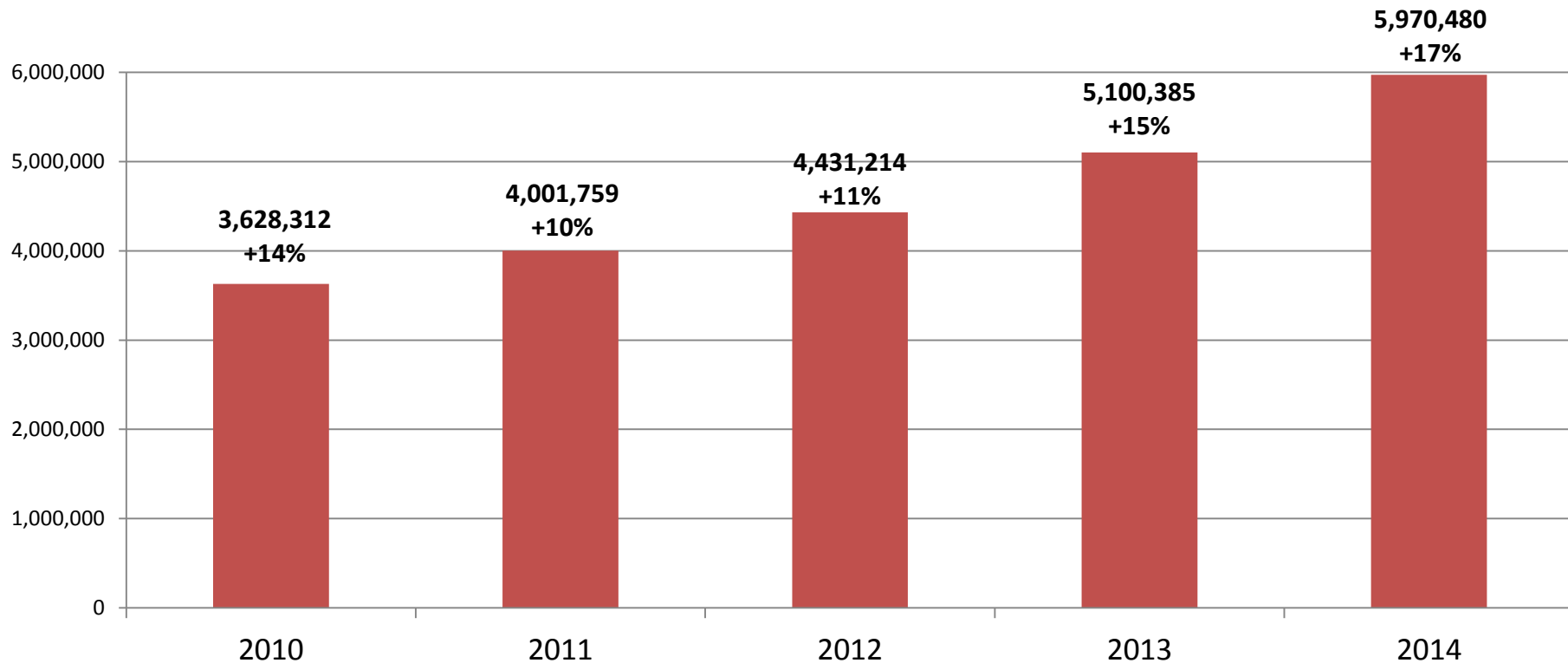
- 540,000ft² of on-dock storage and dock-side rail access at Pier 84.
- Half of the cocoa grinding capacity in the United States is within three hours of Philadelphia.

Automotive Business



Five Years of Double Digit Growth

Total Metric Tons -- 2010 thru 2014



Cargo increase averages: TEUS 19.36%, Breakbulk 14.44%. Liquid Bulk 13.39%, Auto 18.12% and Total Metric Tonnage 16.66%

Container Ocean Services



- East Coast South America
- Australia / NZ



- West Coast South America
- Australia / NZ
- North Europe



- West Coast South America
- Australia / NZ



- West Coast South America
- Australia / NZ
- North Europe



- West Coast South America



- Australia / NZ
- North Europe



- East Coast South America



- East Coast South America



- East Coast South America



- West Coast South America



- East Coast South America
- Australia / NZ



- West Coast South America



- East Coast South America

Break Bulk Ocean Services



- East Coast South America



RICKMERS-LINIE

- East Bound Round the World
- West Bound Round the World



- Japan



- South Korea (Inbound)
- West Africa (Outbound)



- Colombia (Caribbean Coast)
- Costa Rica (Caribbean Coast)



- Scandinavia



- Scandinavia
- Belgium



- Belgium

The Philadelphia Advantage

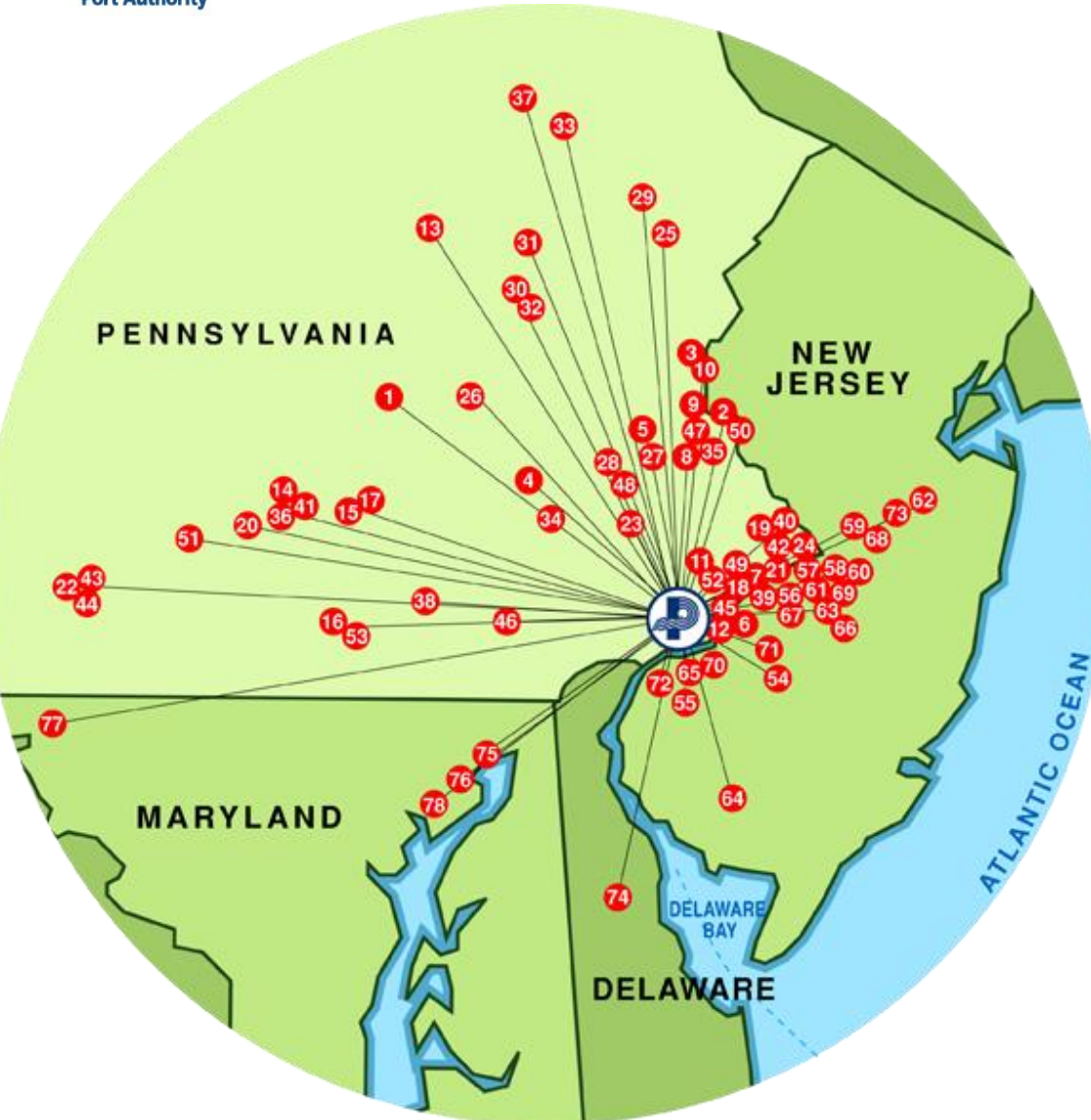
Philadelphia	New York
Air draft of 188 ft (57.3 m)	Air draft of 150 ft (45.7 m) (Bayonne Bridge)
No assessment	NYSA assessment – on average an additional charge of \$100 per container
19 ILA start times	5 ILA start times
6.5 hours from sea buoy	4 hours from sea buoy
No pension withdrawal liability	Pension withdrawal liability
Gross production of 32 moves an hour with individual vessel gross production reaching 40 moves an hour	Gross moves per hour typically less than Philadelphia
Truck turn time less than 1 hour due to lower density operation	Truck turn time unfavorable due to high density operation and overall congestion
10 ILA holidays per year	16 ILA holidays per year



DISTRIBUTION CENTERS - IMPORTS

Philadelphia Regional
Port Authority

Over 300 distribution centers lie within PRPA's immediate hinterland



Pennsylvania

1. Big Lots
2. BMW
3. Bon-Ton Department Store D.C.
4. Boscov's
5. Bridgestone-Firestone, Inc.
6. Case Paper
7. Charming Shoppe
8. Cooper Tire and Rubber Co.
9. Crayola
10. Crayola
11. Deb Shops, Inc.
12. Destination Maternity Corp.
13. Dollar Tree Stores Inc.
14. Foot Locker
15. General Mills
16. Harley-Davidson Motor Company
17. Hershey Foods
18. Home Line Furniture Wholesaler
19. JC Penney
20. Johnson & Johnson
21. Jones Apparel/Nine West
22. Kmart Resource Center
23. Kuehne & Nagel
24. Lanxess
25. Liz Claiborne Inc.
26. Lowe's
27. Mack Truck
28. Mack Truck
29. Maytag Appliances RDC
30. Michaels Stores, Incorporated
31. Office Depot
32. Office Max
33. Paper Magic Group, Inc.
34. Phillips-Van Heusen Corp
35. Porsche North America
36. PPG Auto Glass
37. Proctor & Gamble Paper
38. QVC, Inc. (Apparel)
39. RIO Brands
40. Rite Aid
41. SC Johnson Wax
42. Sears

43. Staples
44. Target
45. T.J. Maxx Distribution Center
46. Urban Outfitters Distribution Center
47. Walgreen's Distribution Center
48. Walgreen's Distribution Center
49. Westinghouse Lighting Solutions
50. Weyerhaeuser
51. Whirlpool
52. World Imports
53. York Barbell Company

New Jersey

54. A. C. Moore Arts & Crafts, Inc.
55. Becton Dickinson
56. BJ's Wholesale Club
57. Burlington Coat Factory Warehouse Corp.
58. Costco Wholesale Corp.
59. Crate & Barrel
60. CVS
61. Home Depot
62. Howard Berger
63. IKEA
64. National Refrigerants
65. Nine West
66. Office Depot
67. OfficeMax
68. Petco
69. Sports Authority Distribution Center
70. Raymour & Flanagan
71. Subaru
72. Trek Bicycles
73. Volkswagen

Delaware

74. Playtex

Maryland

75. IKEA
76. Pier 1 Imports
77. Radio Shack
78. Rite Aid



Philadelphia Regional
Port Authority

MAJOR REGIONAL EXPORTERS



Pennsylvania

1. Air Products
2. Alcoa
3. Ames True Temper Hardware
4. Arkema
5. Armstrong World Industries
6. Craftmaster Manufacturing
7. CRC Industries
8. Crown Hardwood Veneer Corp.
9. Defense Distribution Center
10. Erex Corp.
11. Filmtech
12. FMC Chemicals
13. Gemcor International, Inc.
14. Geo Specialty Chemicals
15. Harley-Davidson
16. JLG Industries, Inc.
17. Kraft Foods
18. LWB Refractories
19. Mack Trucks, Inc.
20. Pennsylvania Crusher Corporation
21. Pfizer
22. Pride Mobility Products
23. Rohm & Haas (Dow Chemical)
24. Sartomer
25. Specialty Minerals

26. Sunoco

27. Tyco Healthcare
28. York International

New Jersey

29. Alcan
30. Conair Corp
31. Innophos
32. L'Oreal
33. Lund's Fisheries, Inc.
34. Mallinckrodt Baker Inc.
35. Volkswagen

Delaware

36. Allen Family Foods
37. DuPont
38. Hercules
39. Invista
40. Mountaire Farms
41. Uniqema

Maryland

42. Mack Trucks, Inc.
43. Perdue

Philadelphia Hinterland Top Companies

QVC®



Pier 1 imports®

CONAIR®



NINE WEST



TREK®



Rail Connections Adjacent To PAMT



CSX



Rail Connections: Mileage Comparison



From:	Philadelphia	New York	Charleston	Savannah
Chicago	814 (2nd day service)	890	980	989
Columbus	545	621	757	767
St. Louis	956	1040	909	866
Memphis	1067	1160	725	668

Road Links



PRPA Terminals are within minutes of major US highways, including I-95 and I-76.

Road Links: Trucking



- Over 300 trucking companies with 15,000 trucks are available in the Philadelphia area.
- Philadelphia does not have the congestion and delays found in North Jersey.
- Overweight truck permits are available.



Delaware River Channel Deepening Project



Length: 103 miles

Cost: \$277 million

Duration: 5 years

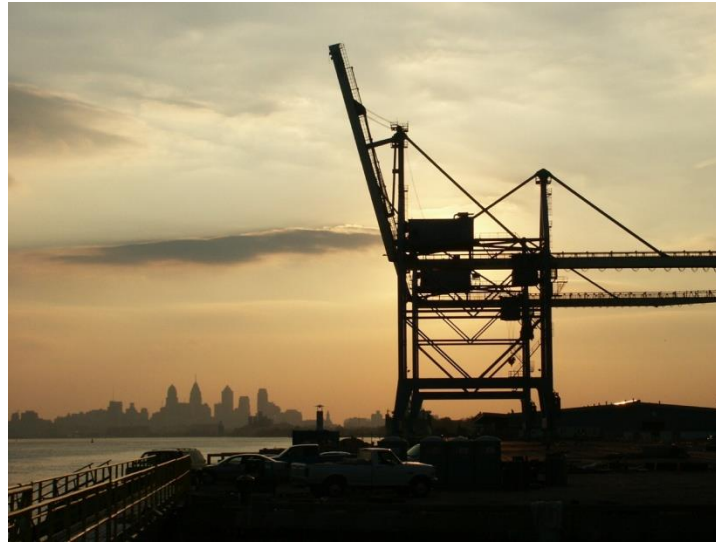
Sponsor: U.S. Army Corps of Engineers

Local Sponsor: PRPA

Material: 16 million cubic yards of dredge materials

Progress: 80% completed. Expected completion in 2017

Port Marketing Support



- Foreign Trade Zone: PRPA is the local grantee for FTZ 35. We can help you utilize this key Customs program.
- Economic Development: We can help you apply for Federal, state, and local economic development assistance to grow or improve your business.

Port Marketing Support



- PRPA Marketing staff can assist you with sales possibilities, advice on supply chain services, statistical information, government liaison, and background.
- International Representatives: PRPA has a staff of 4 overseas transportation experts. They know English, they know the USA, and they can help you.

Foreign Representatives



- Australia/New Zealand: Mr. T.G. Peiris
- Brazil: Mr. Carlos C. Cappellano
- Europe: Mr. Lutz Ehrhardt
- China: Mr. Simon Yao

Philadelphia Regional Port Authority



Proudly Managing Pennsylvania's International Seaport

For additional information please contact the PRPA at

(215)-426-2600 or

www.philaport.com

